

# THE PARTS LOCATOR SEARCH BROWSER

## In Short

The Parts Locator Search Browser is a unique software program developed and maintained by Part Source. It enables the user to download database information from the Part Source website server directly onto the user's hard drive and thereafter be able to search for parts and or vehicles without the need to be online.

The reason why this program has been developed is to prevent having to go onto the Internet every time a part or general information, regarding parts and vehicles, has to be looked for

The time it takes to download information will depend very much on the frequency this function is performed. Publishers of information i.e. Scrapyards are constantly adding and deleting stock received and sold. When the user of the PLSB goes online and activates the update button, the program only checks for changes. If the user has, therefore, not updated for a while it will take longer than when it is done on a daily basis.

Each category i.e. Breakers, Used Parts, etc. has to be updated individually. Updating information on Passenger, Commercial, Agricultural and Construction can be done simultaneously (Explanation later in manual).

Updated data files will also be made available on the Part Source ftp site for users who do not have a need to update every day. These users can update once a week by downloading the latest Parts Locator Data Update.exe file. This file is a self-installation file and will, when activated, update the Parts Locator Search files automatically (explanation on how to do this is on page\*).

To activate the program the user will need a member ID and a Password. The program is supplied totally FREE OF CHARGE but the user is required to become a member of Part Source at R250 per year. This is merely to ensure that program updates are possible and maintained. There are many other spin-offs to being a member (more on pages \*\*\*).

**Please note that for the sake of speed when we refer to 'click on' we refer to the left button of the mouse-pointing device if we want you to use the 'right click' button we will make a special mention of it.**

## ACTIVE INDEX

1. [Downloading the Parts Locator Search Browser](#)
2. [How to Download and Save a program](#)
3. [Installing the Parts Locator Search Browser](#)
4. [Setting up the Parts Locator Search Browser](#)
5. [Updating the data](#)
6. [Using The Parts Locator Search Browser Legend](#)
7. [Using the Find A Part service](#)

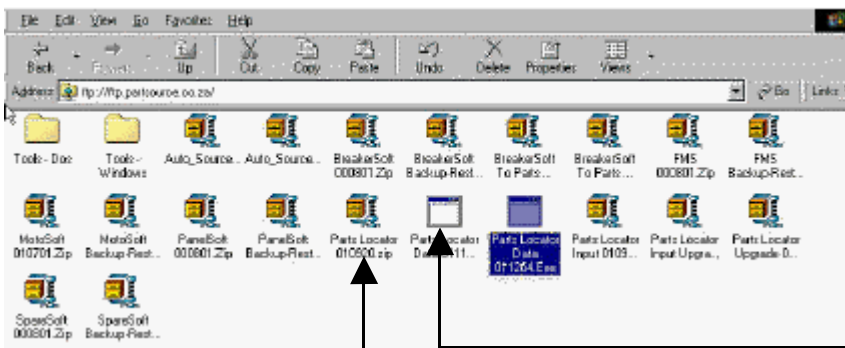
### 1. Downloading The Parts Locator Search Browser

If you have not received the Parts Locator Search Browser (PLSB) on a CD it is possible to download the file from the Part Source ftp site. First, you need to connect to the Internet. If your connection does not take you to your Internet Browser (this can be Internet Explorer 4.0 or higher or Netscape 4.0 or higher) than activate your Internet Browser the moment the connection to the Internet is active.

From you Internet Browser type [ftp.partsource.co.za](ftp://ftp.partsource.co.za) in the address line



This will take you to the Part Source ftp site, which is a specially created space to store all programs and to allow users to obtain such programs and/or updates.



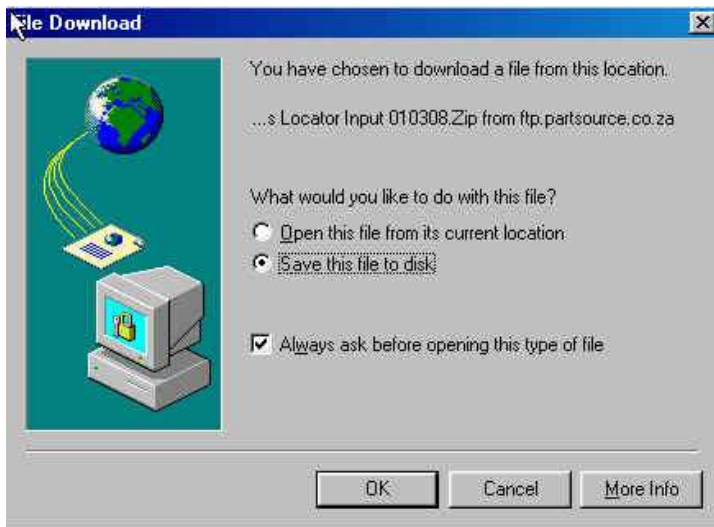
Click on the file named **Parts Locator 010920.zip**

If you have not downloaded programs before we will give you a short indication what to expect and what you are needed to do. Experienced users can skip this part and may go to 'Installing the Parts Locator Search Browser'.

**We will assume that you already have the Winzip program loaded. If you do not have this program loaded you need to download this first following the steps for downloading the PLSB as hereunder. This program is found in 'Tools for Windows' on the ftp site.**

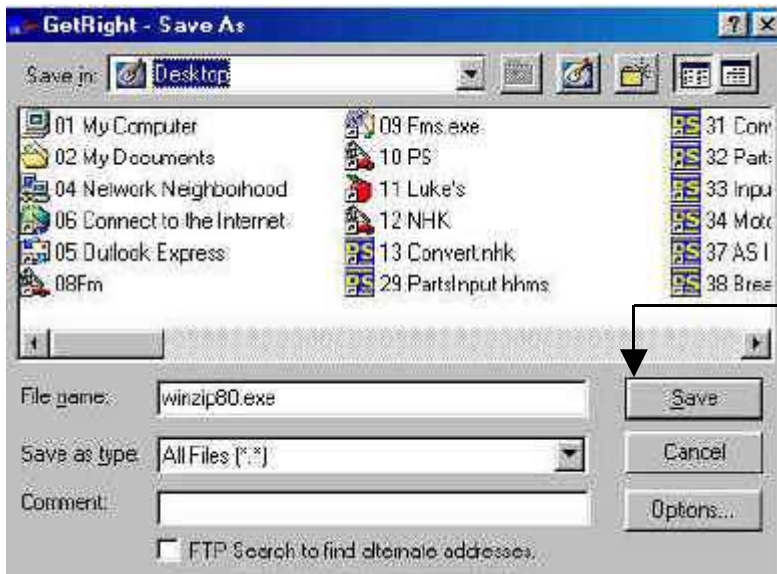
## **2. How To Download And Save A Program**

When you have accessed the Part Source ftp site and you have double clicked on the correct file name 'Parts Locator 010920.zip, another program Winzip will be activated and the following screen will appear (Refer to note on Winzip program above).



Click on 'Save this file to disk' and Click on OK

You will be asked where you wish to save the file (It will normally take you to Desktop) it is best to create a folder in which you will download and save all programs. This makes it easier to find them afterwards).



Although you can save the program to the Desktop it will clutter up your screen. It is best to create another folder and naming it 'Downloads'. You can then place all your downloaded material in this folder.

Once the folder has been created click on 'Save' and the program will start downloading into the folder you created.

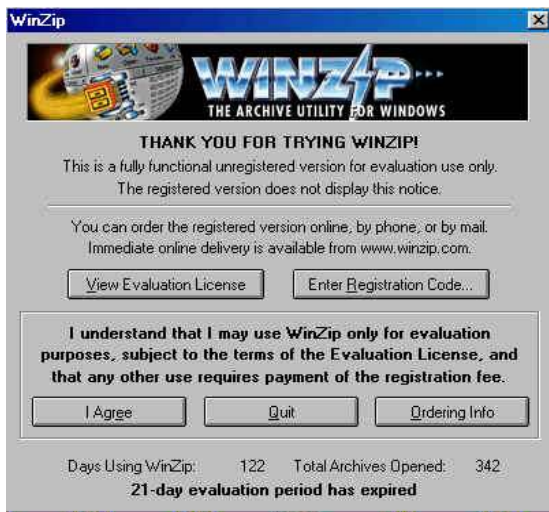


Download processing screen.

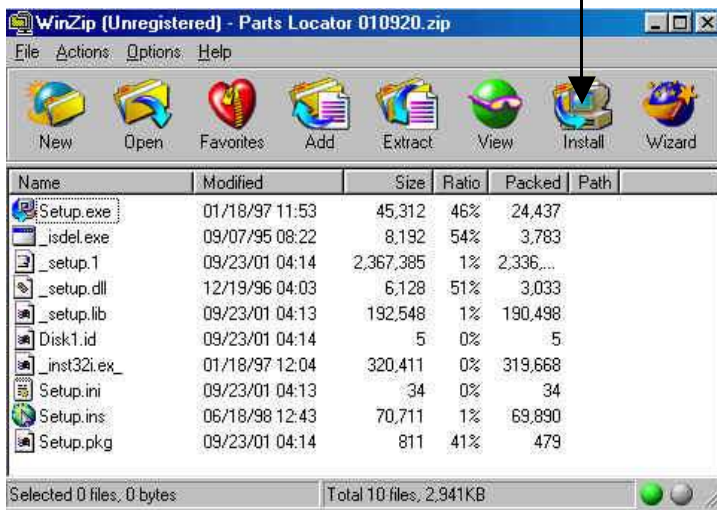
The screen that will appear will tell you how long it will take and at what speed it is bringing the file down into your computer. When done the file will now be saved in the folder you created and you can now disconnect from the Internet. Double click on the Parts Locator 010920.zip file, from wherever this has been saved, and the following screen will appear.

**Tip: When downloading it is a good idea to create a folder called "downloads". This will make it easy to find where you have saved the program files when you look for them again.**

### 3. Installing the Parts Locator Search Browser



Click on "I Agree" This will activate the next action.




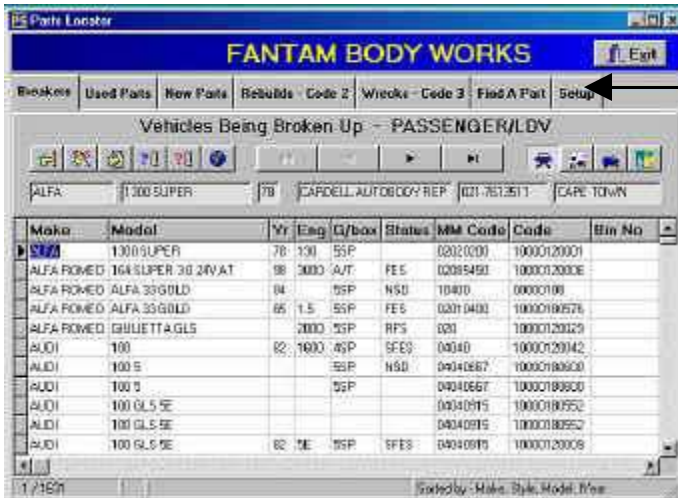
Click on Install and the program will commence to install itself in C:\Program Files\Parts Locator.

It is possible to direct it to your own designated path

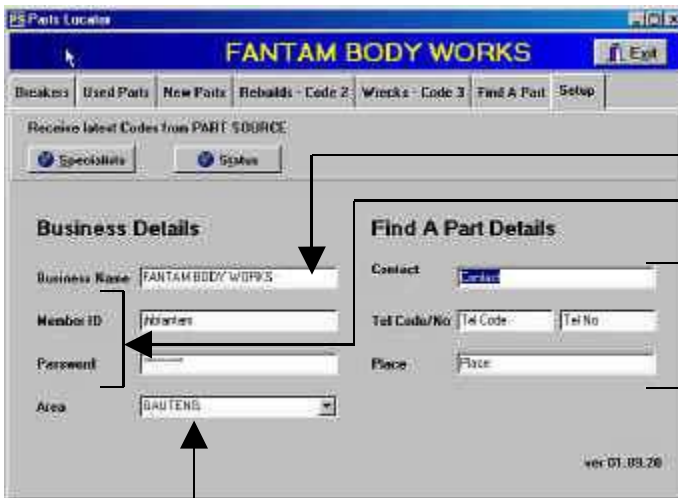
### 4. Setting up the Parts Locator Search Browser

When installation has been completed an icon  will have been created on your desktop and you can now start using the program.

Double click on the  icon and the PLSB will be activated.



Click on 'Setup'



Insert Business name in Capital letters

Member ID and Password will be supplied by Part Source and must be inserted in lower case

Find A Part detail must be completed with detail of user's own choice. This information is sent with any parts requests sent out.

Province can be selected from Dropdown box

You are about ready to start using the program. There are still three things to be done. Go online and when connected Click on 'Specialist'. The hourglass will appear and the program will now update itself. When done do the same with 'Status'.

### 5. Updating the data

To make the updating of stock details less time consuming when this is done for the first time, we suggest that you download the Parts Locator Data File from [the ftp site](#).

You can however update directly from the PLSB but because of the large amount of stock items this could be time consuming when done for the first time.

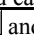
For the sake of this manual we are going to assume that you have updated from a file supplied on the CD or you have downloaded and installed the file from the Part Source ftp site.

As the participating yards are constantly receiving new stock and delete stock sold, the stock changes are quite active and it is therefore necessary to update the program on a regular basis. The more often the program is updated the less time it will take as the program only searches for changes to the stock details and only updates those changes. The longer you leave updating the more changes will have taken place and the longer it will take to update.

### Updating via the PLSB

Each section needs be updated individually

Find A part is only used as an input function when parts are being looked for, which cannot be found on the PLSB


Once you have selected the section you want to update and you have selected the category i.e. Passenger/Ldv, etc you can select the  and program will start updating process.

The hourglass will appear and when finished a message saying 'Transfer Complete'.

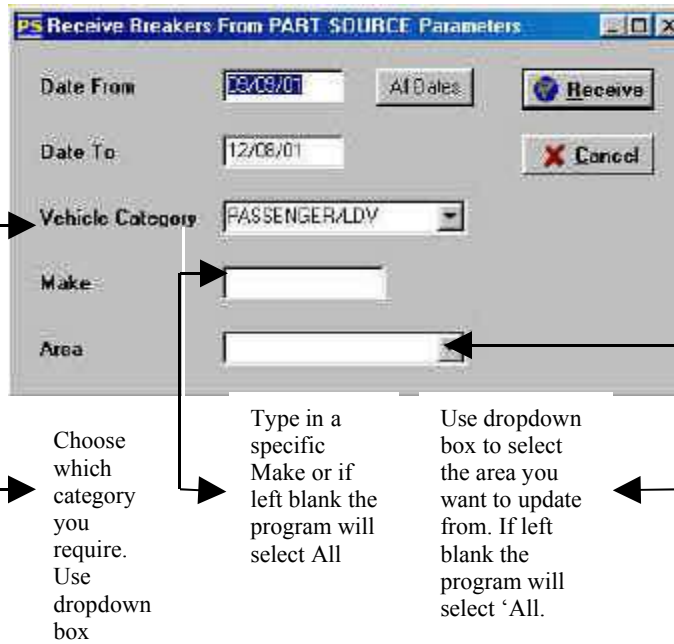
Do each section individually



Select the category you wish to update

The moment you use the  update button you will need to be online with the Internet and the following screen will appear:

You may choose a date from which you want to update but it is best to update from date calculated by the computer. The date inserted in the From Column will indicate when last the information was updated. The To date column is best left as is. When the program updates, it only looks for changes that have taken place on the server's database. When you use "All Dates" the program will replace the entire contents from the server



The moment you activate the 'Receive' button the program will commence to update the information from the server. Please ensure that you are connected to the Internet when you do this

Choose which category you require. Use dropdown box











Type in a specific Make or if left blank the program will select All

Use dropdown box to select the area you want to update from. If left blank the program will select 'All'.

## 6. Using the Parts Locator Search Browser

To describe on paper how the Parts Locator Search Browser works can become extremely laborious while the actual workings of the program is very simple. All that is needed is to place your cursor on each icon and a description will appear telling you what function will take place should it be activated. We will however explain briefly what each icon does.

**Legend** – The icons, when activated, will do the following function:

	Find a specific record		Will access the Passenger/ldv database
	Sort Database		Will access the Commercial database
	Print report		Will access the Agricultural equipment database
	Query database - offline		Will access the Construction equipment database
	Query database - online		Will start the update process between servers

The program will allow the user to select 'Breakers', 'Used Spares', 'New Spares', 'Rebuilds (Code 2)', 'Rebuilds (Code 3)', 'Find A Part'.



**Breakers** – Is a list of vehicles being broken up by various dismantler's for parts?

Click on the dropdown box arrows and select the Make, Style, etc.

**Tip: To quick select a vehicle from the dropdown box you may type the first letter of the vehicle name from the keyboard. You will be taken to the first word starting with this letter i.e. T for Toyota**

Type the Make i.e. Alfa, Style i.e. Giulietta, etc. Click on the Query button and the program will now search the server database instead of the local computer (Please note: You have to be connected to the Internet to be able to do this function)

Style will select in what format the vehicle is shaped i.e. Audi 500, BMW 3 series, Model will take style to greater detail. By choosing year you may restrict the search too much and is not recommended as vehicles are often manufactured over more than one year. Code field is the seller/program code for the vehicle. M&M Code is the Mead & McGrouther coding system for vehicles as found in the Auto Digest booklets used by the motor trade. Use dropdown box feature, where available, to select.

Make	Model	Yr	Eng	G/box	Status	M&M Code	Code	Bin No
ALFA ROMEO	1300 SLIPER	78	1301	55P		0200200	10000120001	
ALFA ROMEO	164 SLIPER 3.0 20V AT	88	3000	A/T	FES	023854010	10000120008	
ALFA ROMEO	ALFA 33 GOLD	84		55P	NSD	10400	00000108	
ALFA ROMEO	ALFA 33 GOLD	85	1.5	55P	FES	02010400	10000186576	
ALFA ROMEO	GIULIETTA SLS	2000		55P	RFS	030	10000120029	
AUDI	100	82	1600	45P	5FES	04040	10000120042	
AUDI	100S			55P	NSD	04040667	10000186600	
AUDI	100S			55P		04040667	10000186600	
AUDI	100GLS SE					04040915	10000186552	
AUDI	100GLS SE					04040915	10000186552	
AUDI	100GLS SE	82	SE	55P	5FES	04040915	10000120009	

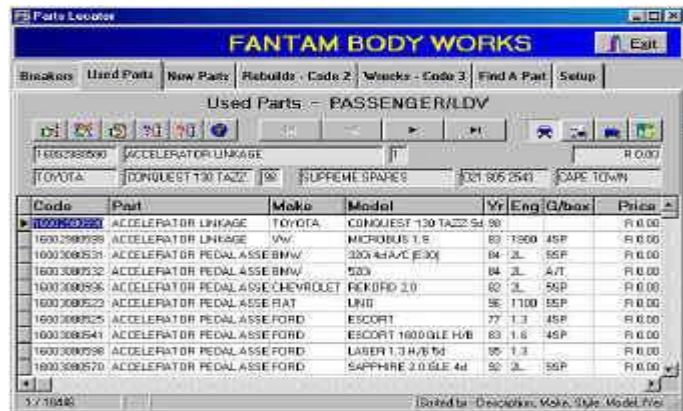
The same procedure as for Breakers applies when searching for Rebuilds Code 2 & 3

## Used Parts

More and more dismantlers are starting to identify the parts from vehicles they are breaking and placing them into the Parts Locator database. These parts may be accessed via this section.

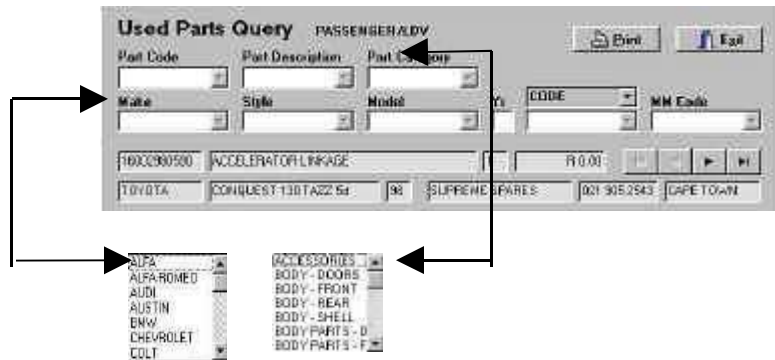
Searching for Used Parts is much the same as for Breakers and Rebuilds except that you have a more detailed choice of search.

Otherwise all the icons work exactly the same.



In the Used Parts Query screen you can now narrow search down to Parts Code, Parts Description and Parts Category.

You will find that using the parts Category is about the most common one to use




## 7. Using the Find A Part Service

It may happen that parts looked for may not be found on the database. In this case the user may place a request for the parts on the Find A Part service. The participating dismantlers pick up information sent to the server and whoever has the part will then respond, call the user and negotiate payment and delivery procedure.

To effectively use the Find A Part service, follow the instructions below.



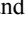
The contact and telephone number details are picked up from information entered under 'Setup'.

Once all information has been entered go online and activate . This will, at the same time, delete items you are no longer looking for and you marked with the minus sign.



Make	Model	Year	Part	Picture
Hilux	2.0	00	FRONT SECTION	<a href="#">Picture</a>

For the sake of speed, when downloading, the pictures should not be bigger than 340 x 245 pixels

Type in Make, Model, Year, Part Description and add a photo of the vehicle or/and part wanted. If there are more than one part is wanted click on the  mark and then the . This will add another line for the next part. Delete a part using  and  if you want to edit something.