

THE PARTS LOCATOR INPUT BROWSER

General

The Parts Locator Input Browser is a unique software program developed and maintained by Part Source. It enables the user to publish vehicle/part/Rebuild (code2)/Wrecks (Code3) information onto the Part Source website server directly from the user's in-house computer complete with graphics.

The reason why this program has been developed is to streamline the flow of information with the minimum of people being involved.

Each category i.e. Breakers, Used Parts, etc. has to be published individually. Updating information on Passenger, Commercial, Agricultural and Construction can be done simultaneously.

To activate the program the user will need a member ID and a Password. The program is supplied totally FREE OF CHARGE and is included in the advertising costs.

This manual is a step-by-step instruction on how to use the program.

Please note that for the sake of speed when we refer to 'click on' we refer to the left button of the mouse-pointing device if we want you to use the 'right click' button we will make a special mention of it.

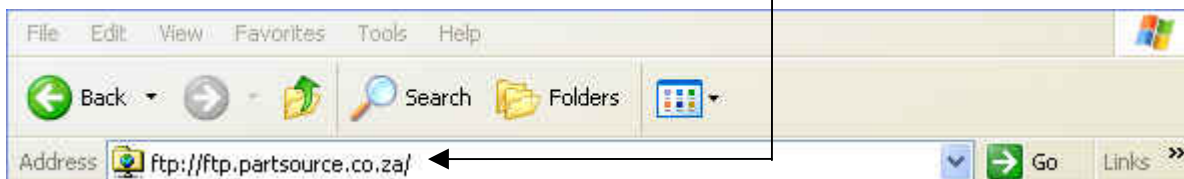
INDEX

1. Downloading the Parts Locator Input Browser
2. How to Download and Save a program
3. Installing the Parts Locator Input Browser
4. Setting up the Parts Locator Input Browser
5. Capturing data
6. Using the Find A Part service

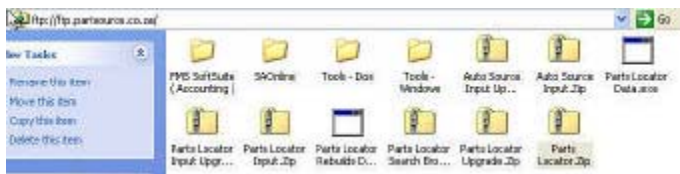
1. Downloading the Parts Locator Input Browser

If you have not received the Parts Locator Input Browser (PLIB) on a CD it is possible to download the file from the Part Source ftp site or from the Home page of www.partsource.co.za. First, you need to connect to the Internet. If your connection does not take you to your Internet Browser (this can be Internet Explorer 4.0 or higher or Netscape 4.0 or higher) than activate your Internet Browser the moment the connection to the Internet is active.

From your Internet Browser address line [ftp.partsource.co.za](ftp://ftp.partsource.co.za)



This will take you to the Part Source ftp site, which is a specially created space to store all programs and to allow users to obtain such programs and/or updates.



Click on the file named **Parts Locator Input.zip**

If you have not downloaded programs before we will give you a short indication what to expect and what is required. Experienced users can skip this part and may go to 'Installing the Parts Locator Input Browser'.

We will assume that you already have the Winzip program loaded. If you do not have this program loaded you need to download this first following the steps for downloading the PLIB as hereunder. Winzip may be found at www.winzip.com

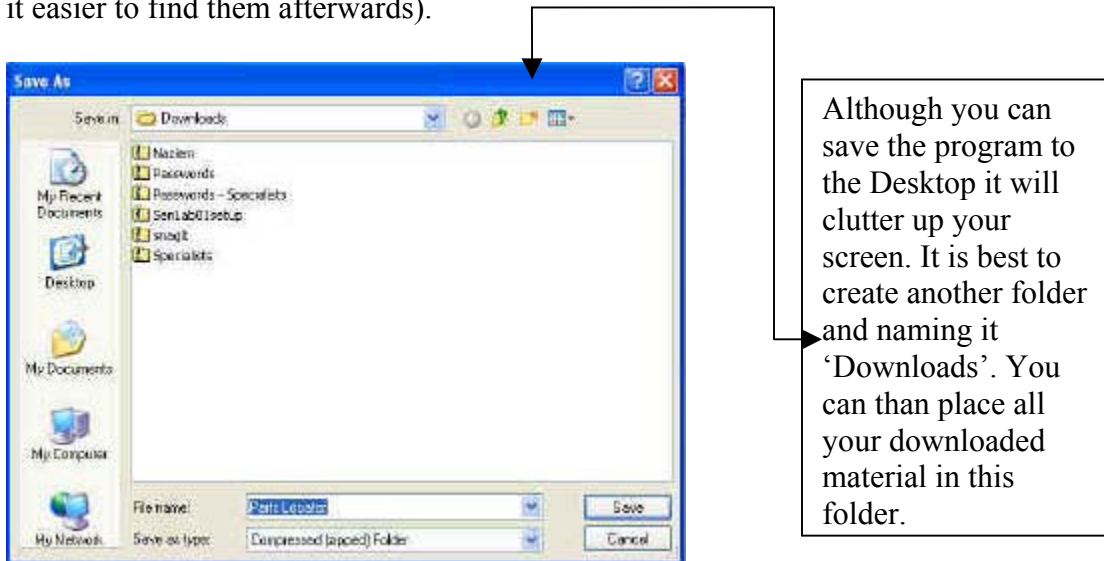
2. How To Download And Save A Program

When you have accessed the Part Source ftp site and you have double clicked on the

correct file name 'Parts Locator Input.zip, another program Winzip will be activated and the following screen will appear (Refer to note on Winzip program above).

Click on 'Save this file to disk' and Click on OK

You will be asked where you wish to save the file (It will normally take you to Desktop) it is best to create a folder in which you will download and save all programs. This makes it easier to find them afterwards).



Once the folder has been created click on 'Save' and the program will start downloading into the folder you created.



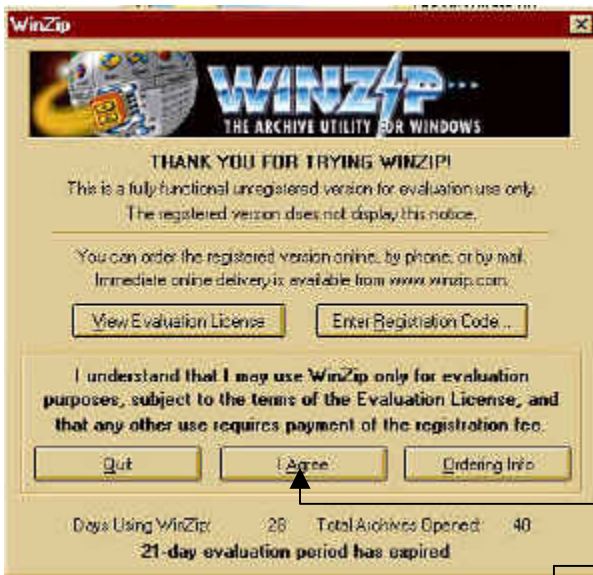
Download processing screen.

The screen that will appear will tell you how long it will take and at what speed it is bringing the file down into your computer. When done the file will now be saved in the folder you created and you can now disconnect from the Internet.

Double click on the Parts Locator.zip file, from wherever this has been saved, and the following screen will appear.

Tip: When downloading it is a good idea to create a folder called "downloads". This will make it easy to find where you have saved the program files when you look for them again.

3. Installing the Parts Locator Input Browser – (We are here giving you the procedure as it will appear in Windows98 – XP has its own decompress program and works slightly different and easier)

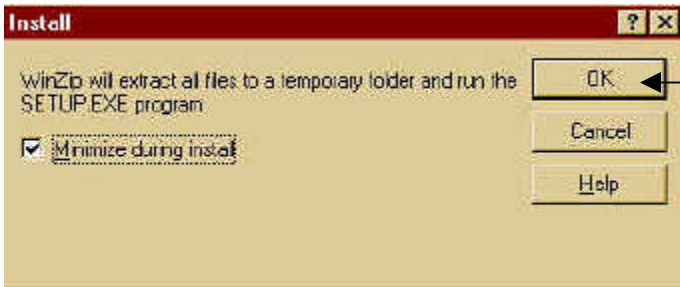


Click on "I Agree" This will activate the next action.




Click on Install and the program will commence to install itself in C:\Program Files\Parts Locator Input.


It is possible to direct it to your own designated path



Click on OK and the program will install

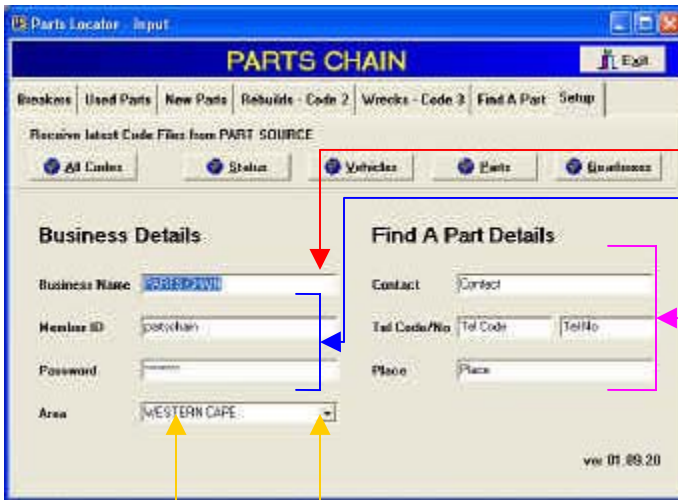
4. Setting up the Parts Locator Input Browser

When installation has been completed an icon  will have been created on your desktop and you can now start using the program.

Double click on the  icon and the PLIB will be activated.



Click on 'Setup'





Insert Business name in Capital letters

Member ID and Password will be supplied by Part Source and must be inserted in lower case

Find A Part detail must be completed with detail of user's own choice. This information is sent with any parts requests sent out.

Province can be selected from Dropdown box

You are about ready to start using the program. There is still one thing to be done. Go online and when connected Click on 'All Codes' . The hourglass  will appear and the program will now update itself. It is possible to update the buttons individually

5. Capturing data

The Parts Locator Input Browser has 5 sections namely Breakers, Used Parts, New Parts, Rebuilds and Wrecks. All 5 need to be updated individually onto the server and subsequently onto the various websites. We will deal with them individually.

5a. Breakers – As many yards are not yet numbering the parts obtained from a vehicle the only information that can be supplied is the fact that the whole vehicle is in stock. It is

a quick way of identifying where a part may possibly be found knowing where a particular vehicle is being dismantled. As many people have different ideas of Makes and Models we have decided to adhere to a discipline and we have created a complete listing of available vehicles on the South African roads as published by Mead & McGrouther (M&M) per their Auto Digest Booklet used by the Used Car Dealers to determine trade prices. In this discipline we have used the M&M numbering system for easy and correct vehicle identification.

Each section needs be published individually

To select the Make and Model click on the three dots inside the Make field. A screen will appear that will allow you to select the make and model from a long list. Once the vehicle has been selected you can now enter all relevant detail pertaining to the vehicle by scrolling to the right.

Once you have completed a line click on to save the information and then on to create a new line. Please note you cannot enter your own Make & Model – it has to be selected from the list.

Find A Part has a dual request/receive feature

Select the category you wish to publish. They are:

- Passenger Ldv
- Commercial
- Agricultural
- Construction

3 dots will activate a dropdown box

Scroll to the right to enter more details of the vehicle

Type in first 3 letters of the Make i.e. Toy for Toyota. The list below will automatically show a complete list of Toyotas. Now type in first 3 letters of model and the list will indicate a list of these models i.e. Hil for Hilux, etc. Now you can scroll through the list and select the one that best fits the description. Click on it and click on the **Select** button. The information will drop into the line and the dropdown box will disappear. When details have been entered click on to save and to create a new line.

5b & c. Publishing individual parts Used and New

The procedures for publishing both new and used parts are identical but they do need to be published individually. For the sake of this manual we will treat them as one.

The only difference between individual parts and breakers is that you need to select the part description first and than the Make and Model. Please follow the steps as set out for you.

Step 1. – Select a vehicle category.

Step 2. – Activate the 3 dots in the 'Code' field.

Step 3. – Type in the first couple of letters describing the part i.e. ENG for engine.

You will note that the list below will now list all engine related parts. Select the one you want and click on the 'Select' button. The item will now be displayed in the PLIB program and the dropdown box will disappear.

Step 4 – Click on the 3 dots in the Make field and in the dropdown box type in the first 3 letter of the vehicle name i.e. TOY for Toyota.

The list below the block will now show Toyota. Now type in the first three letters of the model in the next field i.e. HIL for Hilux and the list below will now show all the Toyota Hilux models. Select the one you need and click on the 'Select' button. The line in the PLIB program will now be completed with the selected information.

Please note:

Due to the different ways parts are described and to prevent confusion a list has been prepared from which to choose parts. We have tried, where possible, to adhere to the most common names we could find. It is not possible to make up your own part description. Any new parts not present should be phone/faxed through to the helpdesk on 086 110 0202

Step 5 – To save the entry you made click on To add a new line click on To delete a line use To exit use To edit a line use To publish data connect to the Internet and click on

5 e & f. – Publishing Rebuild (Code 2) and Wrecks (Code 3)

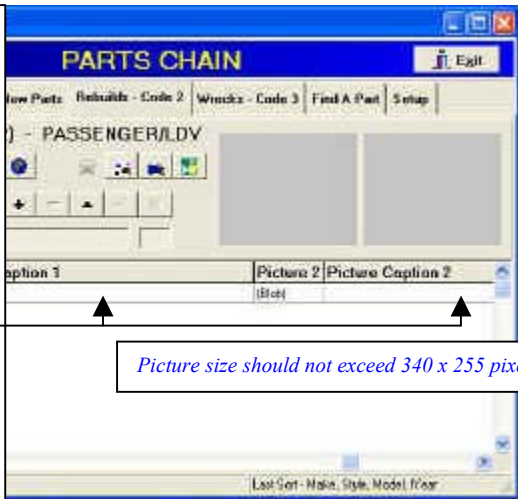
Collision damaged repairable vehicles and wrecks for dismantling are captured in exactly the same way as for Breakers with exception that photos can be added. So as not to repeat the same things over and over in this manual we will skip the initial vehicle detail capture (Refer 5a for instructions) and just take you through the photo capture parts.

Accident damaged vehicles are published by many dismantlers from all over the country. To save time and cost we strongly recommend that photos are made available making it easier for potential buyers to make up their minds whether they will be interested in a vehicle before spending money on traveling. It is also in your interest to take photographs in such a way that they supply a true picture of the state of the vehicle.

For reference on capturing vehicle data please refer to section 5a

In this section we only deal with capturing photographs.











Once you have captured a vehicle you now need to scroll to the right until you get to two fields called Blob1 and Blob2. Click on the 3 dots and this will take you to the folder browser from where you can fetch the saved photographs. Double click on the photograph of your choice and it will drop into the square



Important notice:

Graphics and photographs tend to slow down the loading procedure on the Internet quite dramatically and many people get annoyed when this happens. It is therefore in your interest to ensure that your pictures are optimized to lowest possible acceptable resolution. We have a FREE program available that will do this very nicely. Call 110 0202 to get your copy.

Button legend – The icons, when activated, will do the following function:

- | | | | |
|---|--------------------------|---|---|
|  | Find a specific record |  | Will access the Passenger/ldv database |
|  | Sort Database |  | Will access the Commercial database |
|  | Print report |  | Will access the Agricultural equipment database |
|  | Query database - offline |  | Will access the Construction equipment database |
|  | Query database - online |  | Will start the update process between servers |

The program will allow the user to select 'Breakers', 'Used Spares', 'New Spares', 'Rebuilds (Code 2)', 'Rebuilds (Code 3)', 'Find A Part'.



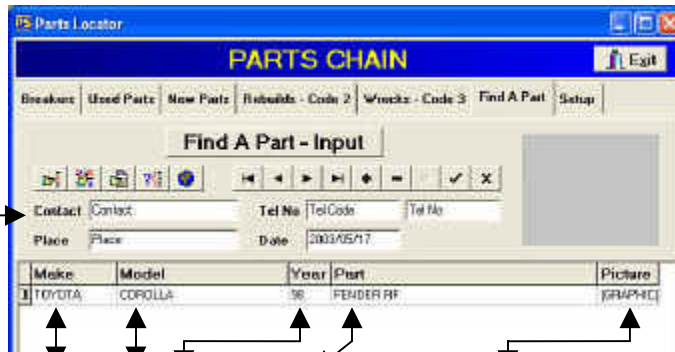
6. Using the Find A Part Service

It may happen that the required parts may not be found on the database. In this case the user may place a request for the parts on the Find A Part service. The participating dismantlers regularly check the central computer for new requests and whoever has the part(s) will then respond, call the user and negotiate payment and delivery procedure.

To effectively use the Find A Part service, follow the instructions

The contact and telephone number details are picked up from information entered under 'Setup'.

Once all information has been entered go online and activate . This will, at the same time, delete items you are no longer looking for and you marked with the minus sign.



For the sake of speed, when transferring the pictures make sure they are not bigger 340 x 245 pixels.

We have a special program available to optimize photos to lowest acceptable resolution. We will gladly let you a copy.

Type in Make, Model, Year, Part Description and add a photo of the vehicle or/and part wanted. To add another line use the . If you need to delete a part/line use . After adding a line click on to save the previous entry. To edit a line or field use . To abort a new entry use .

All information may be entered while offline. When you have finished entering parts and you are ready to transmit the information to the Part Source server you first need to connect to the Internet (Please note the PLSB will not connect automatically to the Internet and you need to follow your normal way you always connect to the Internet.). When connected click on the and the upload process will commence.

END OF MANUAL

For any queries please contact our helpdesk on 086 110 0202 between 8 and 5 Monday to Friday