

Installing MySQL ODBC 3.51 Driver (Windows XP)

To use any of the Part Source Capture Browsers you need to install the ODBC Driver which you will find on the CD supplied or by visiting www.partsource.co.za/downloads

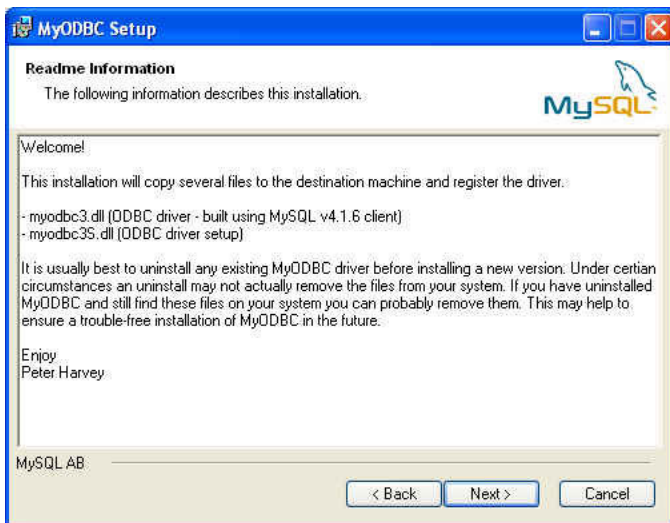
Select the file **MyODBC-3.51.11-2** and follow the instructions as they appear.



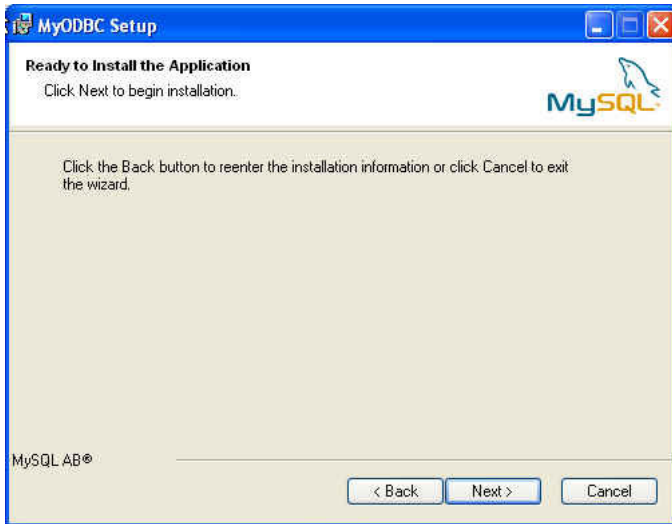
Select Next



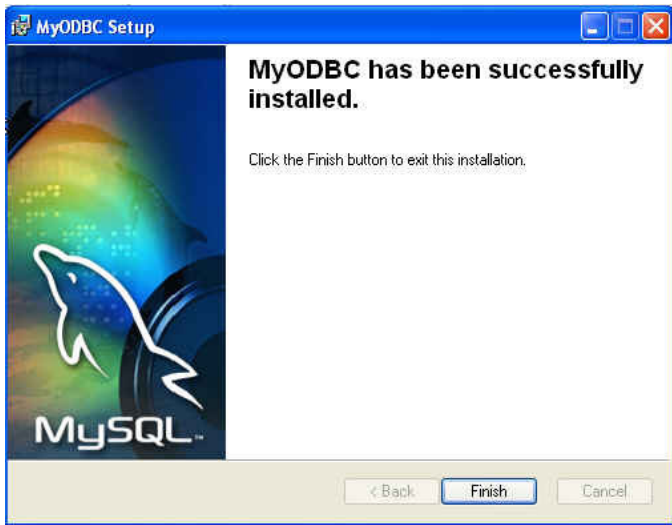
Click in the radio button "Accept the License Agreement" and select Next.



Accept the **Readme Information** and click on Next.



Click on Next.



Select Finish.

The ODBC software will have been installed in C:\Windows\system32 if you are using Windows XP and in c:\Windows\system if you are using Win 98 as your operating system.

Now is the time to go to your download folder where you saved all the software you downloaded from the Part Source website (or use the CD you received) and select ODBC.reg



ODBC.reg

If you are using Windows XP you may see the following message appear:

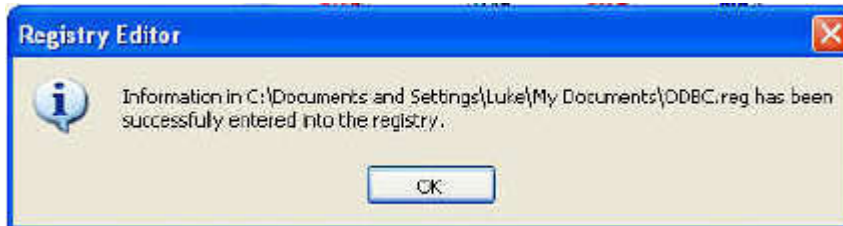


This is a Windows XP security check and you may select the run button. This will solicit the next warning such as:



You may select the Yes button (Please note it will not necessarily place it in the path as indicated on the picture as each installation is different according to the computer setup – this is only a sample of what the message may look like).

Once you have done all of the above you will receive the following message:



The ODBC has now been setup in your Windows registry and you will now be able access the Part Source server for the purpose of up and downloading information.

Please close all Windows and return to the Desktop. You can activate any of the Part Source programs.

PLEASE NOTE: You will need to enter your business name, member ID and password in the setup section of each program before they will function. This information will have been supplied to you via email.

WE hope that you will derive much pleasure from using the Part Source Parts Information software.

For any further assistance you can reach the Part Source helpdesk on 086 110 0202 between 08:00 and 16:00 Monday to Friday (excluding public holidays)